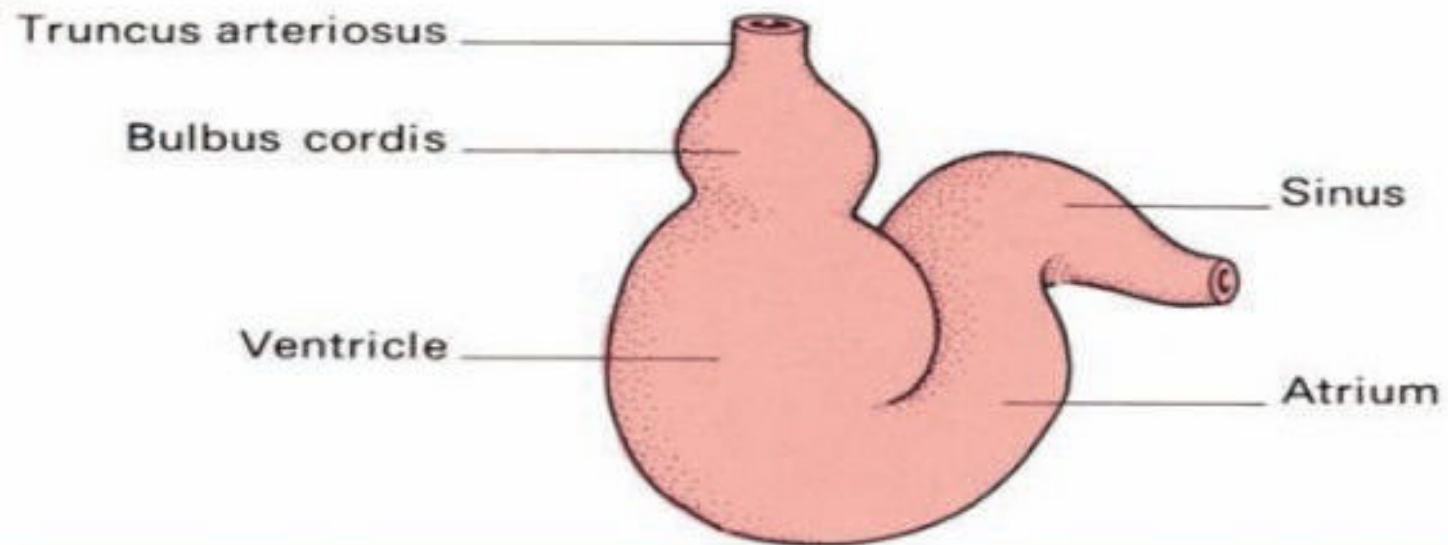
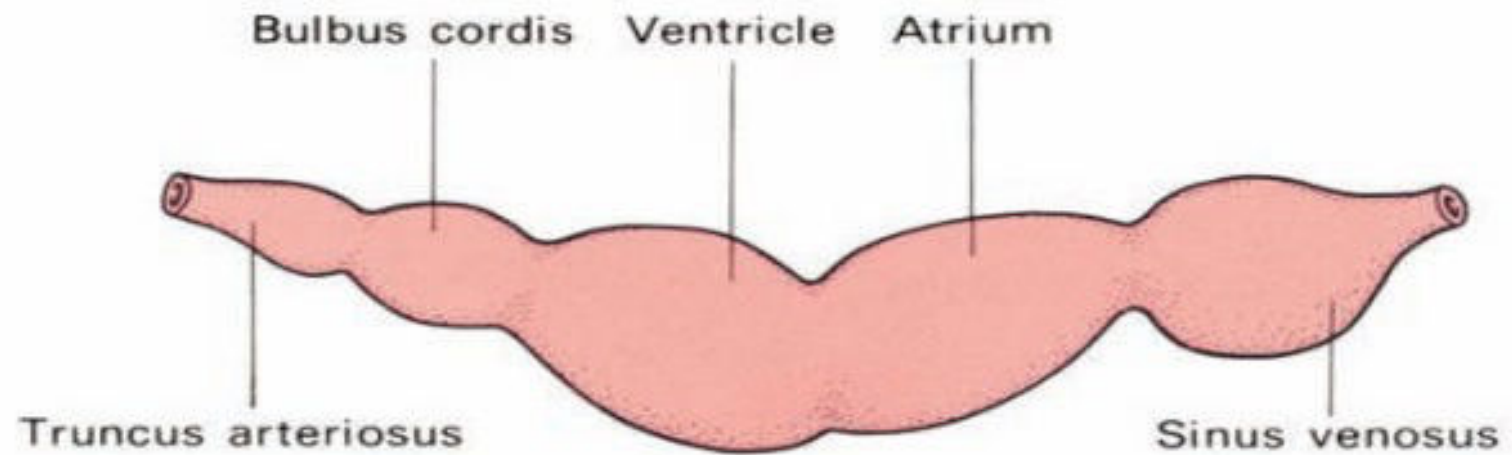
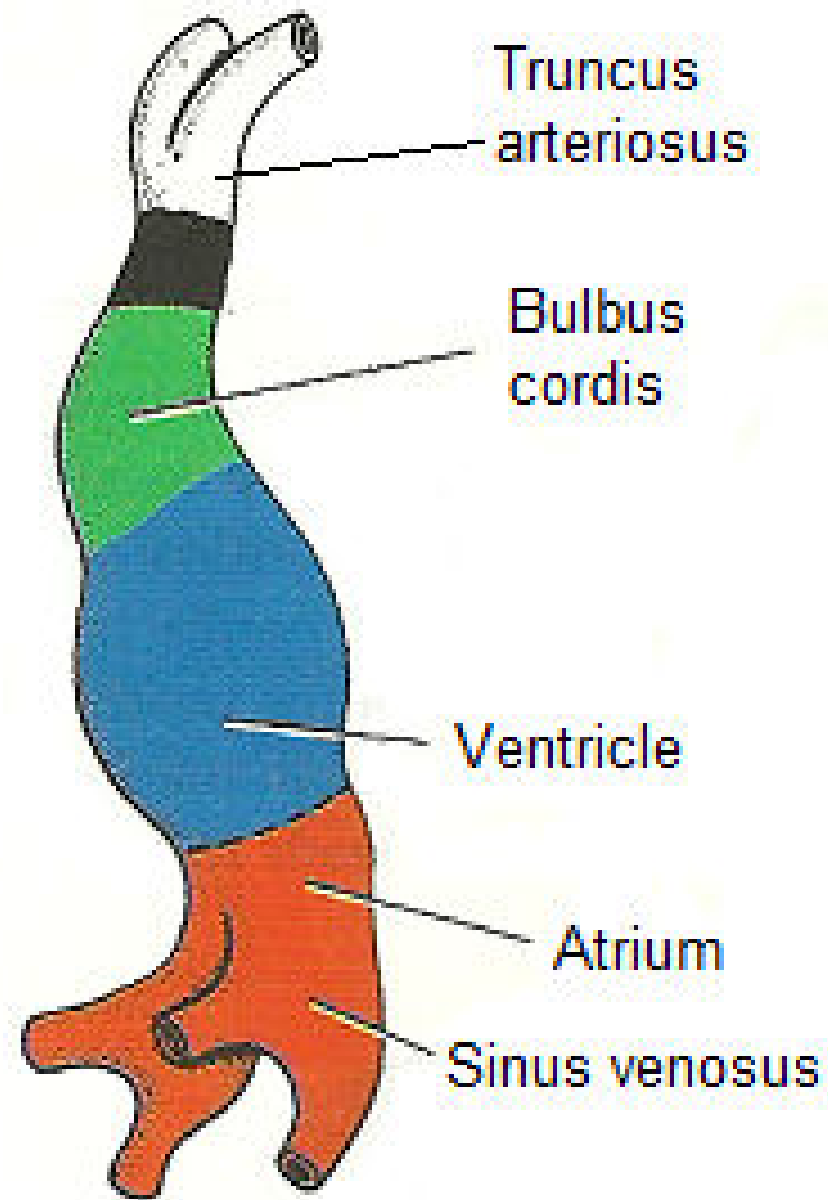


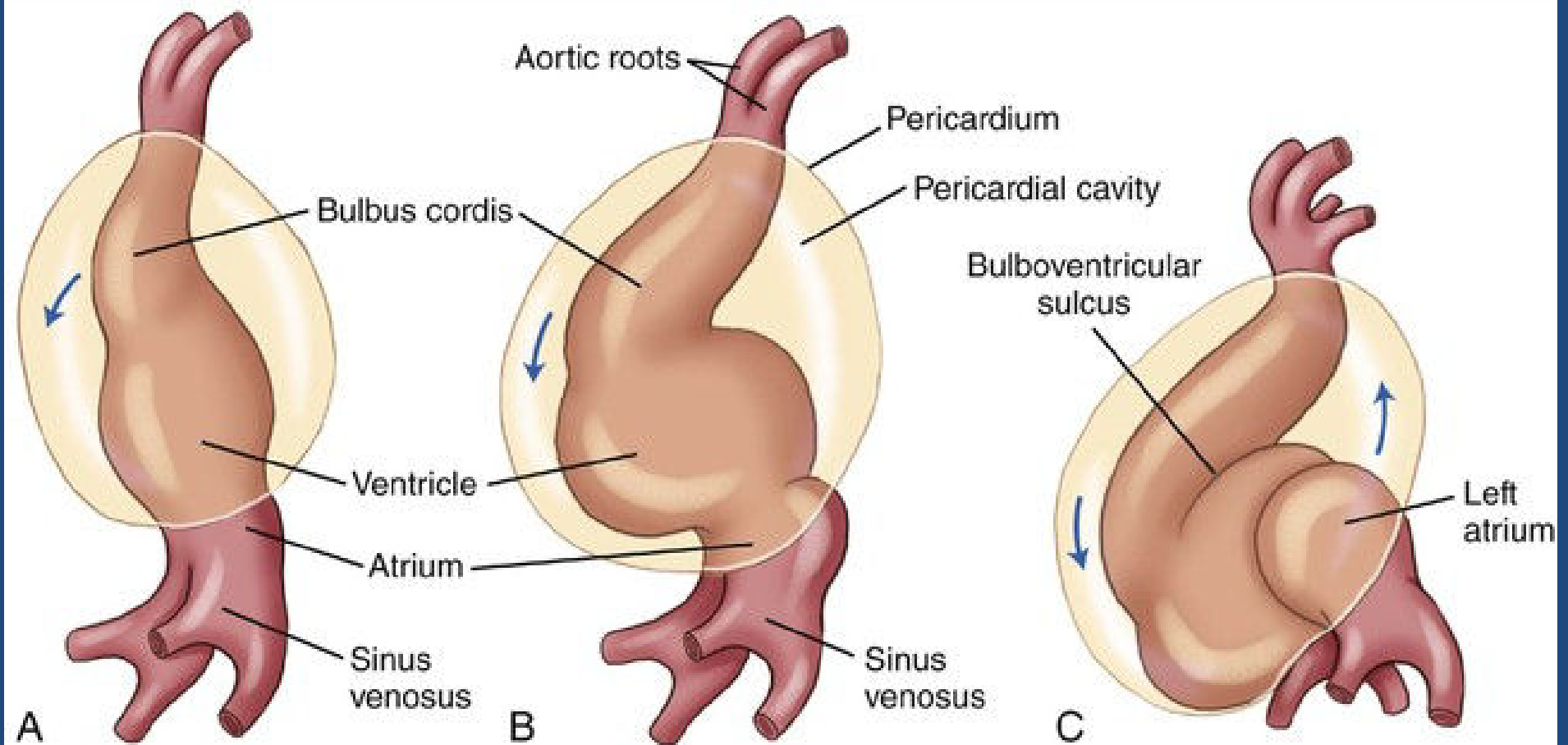


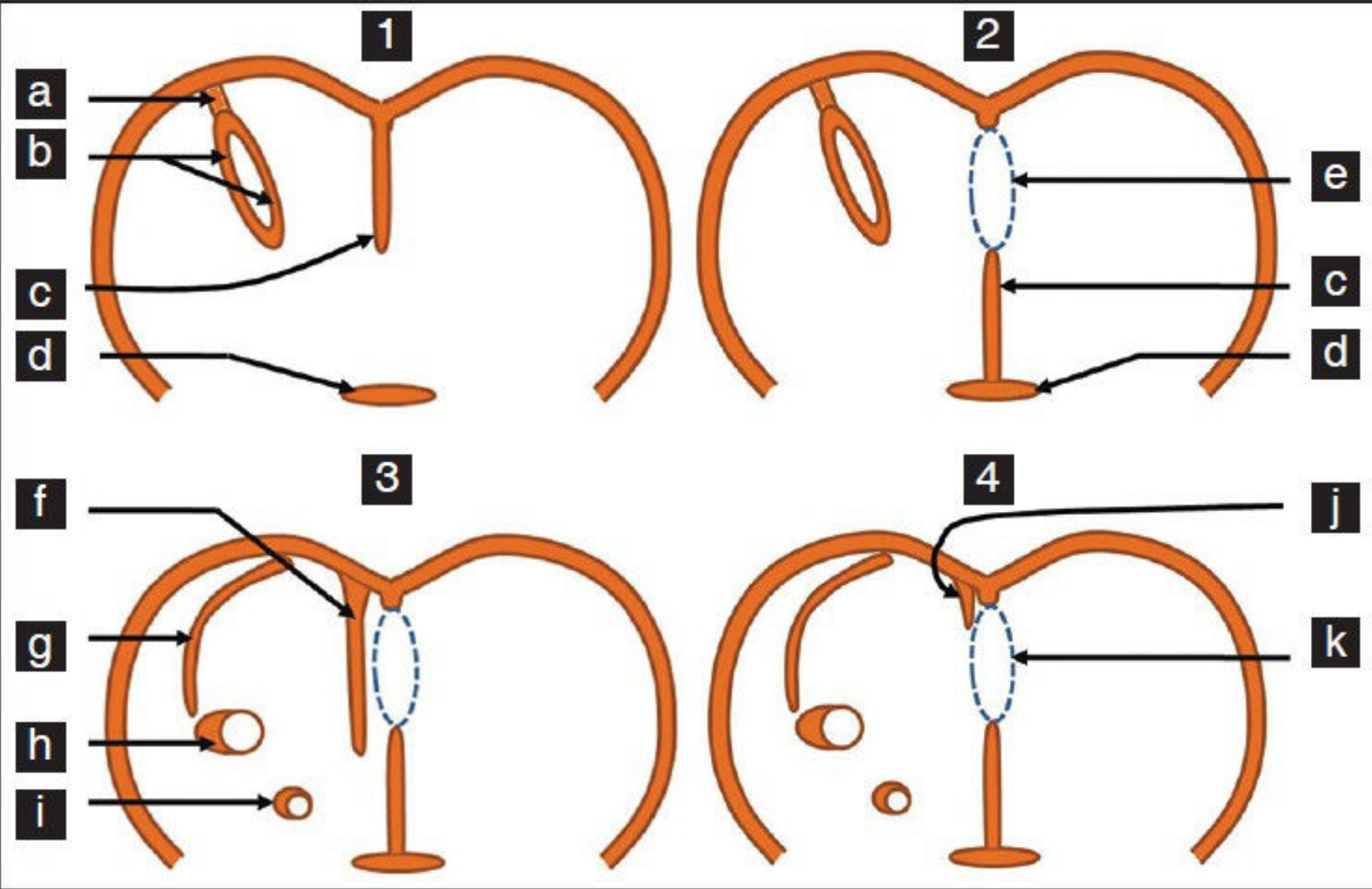
Development of CVS

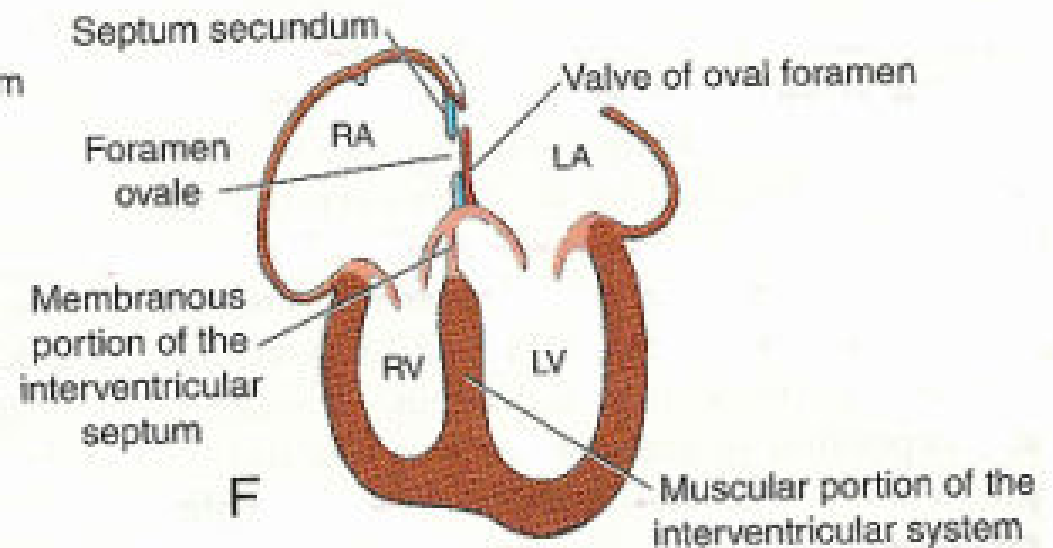
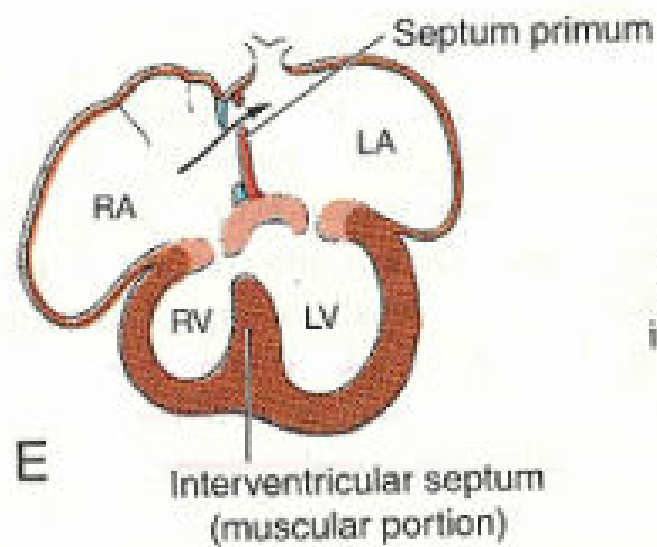
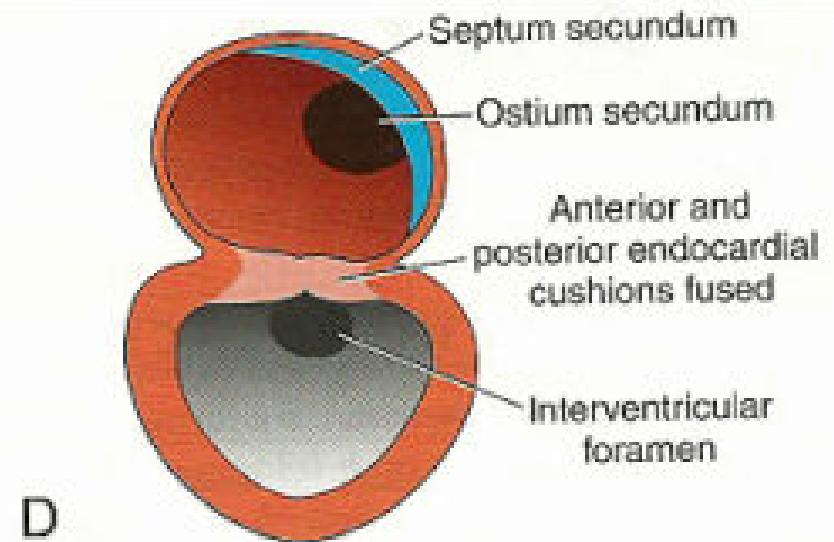
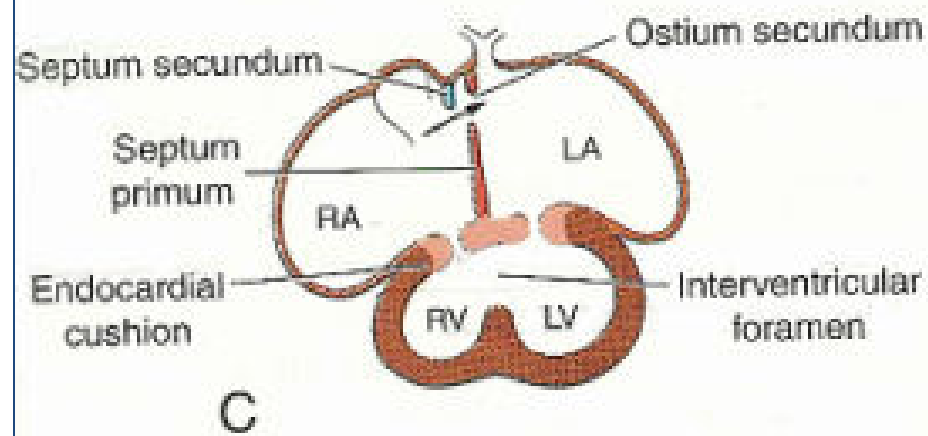
Dr. Rowayda Mohamed

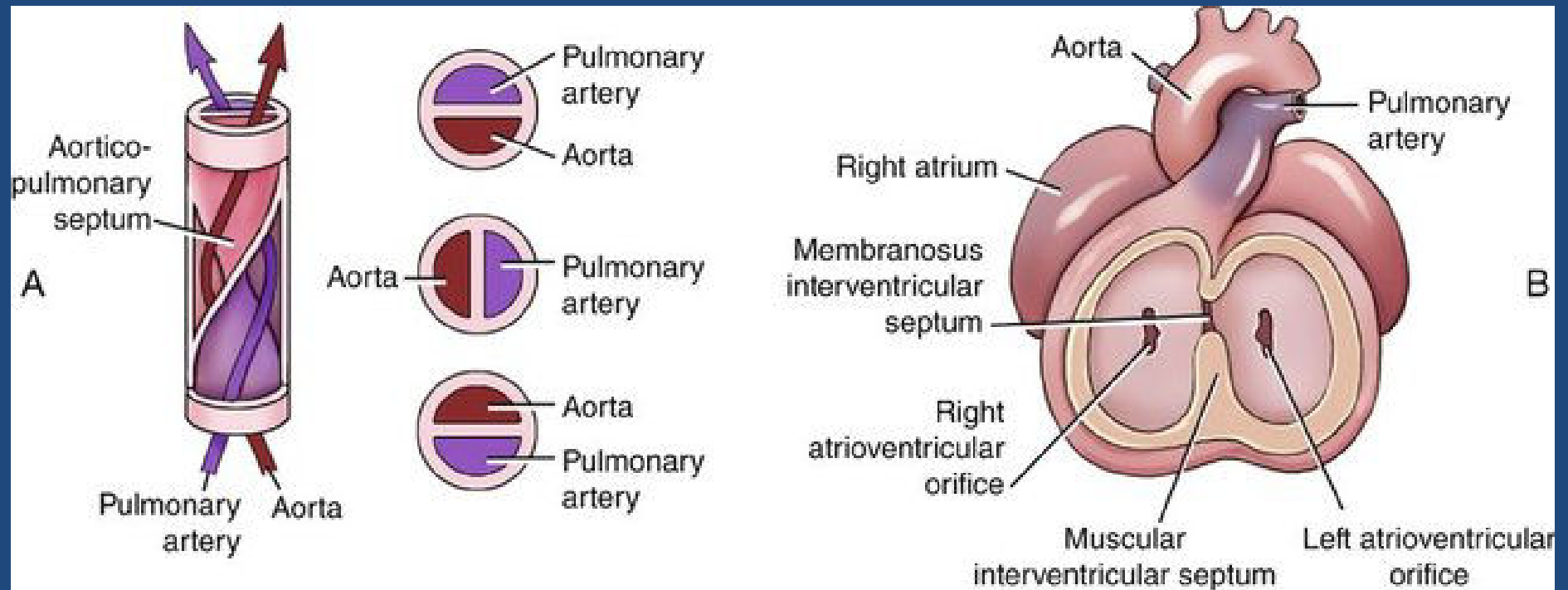


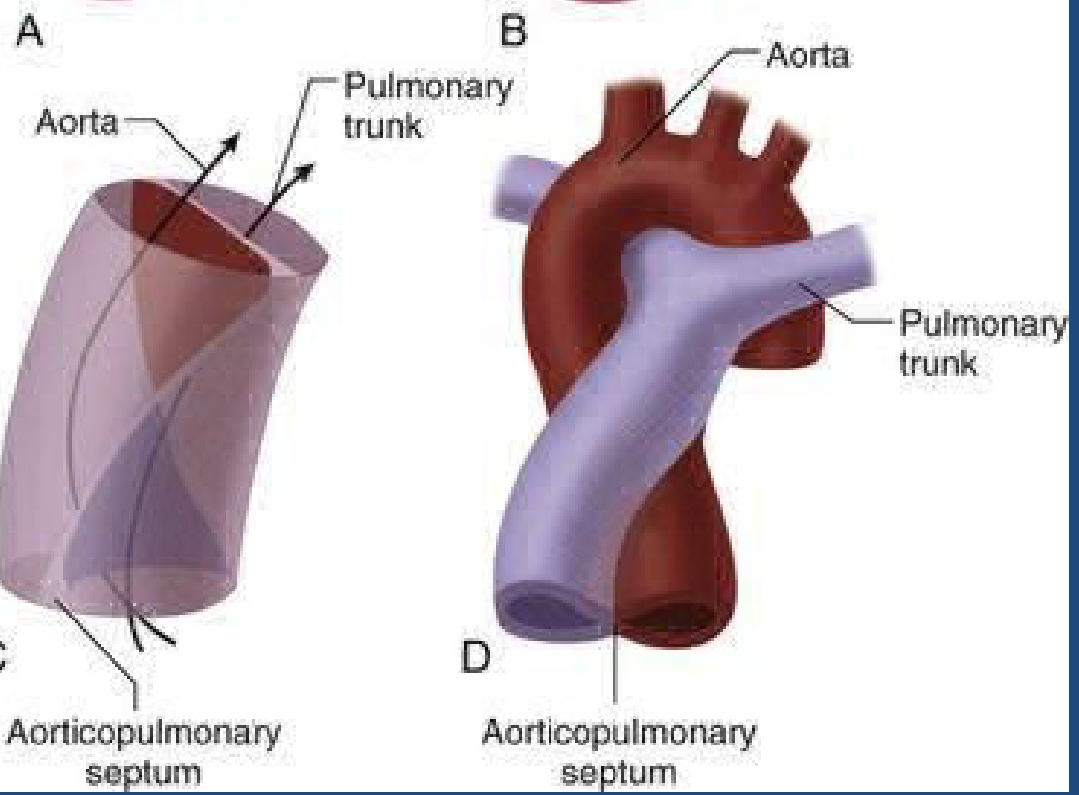
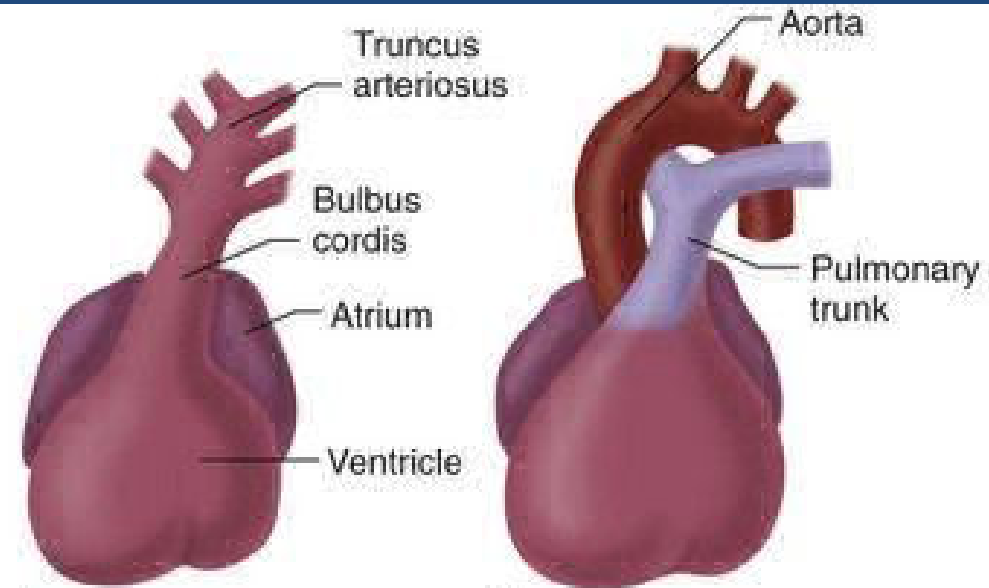


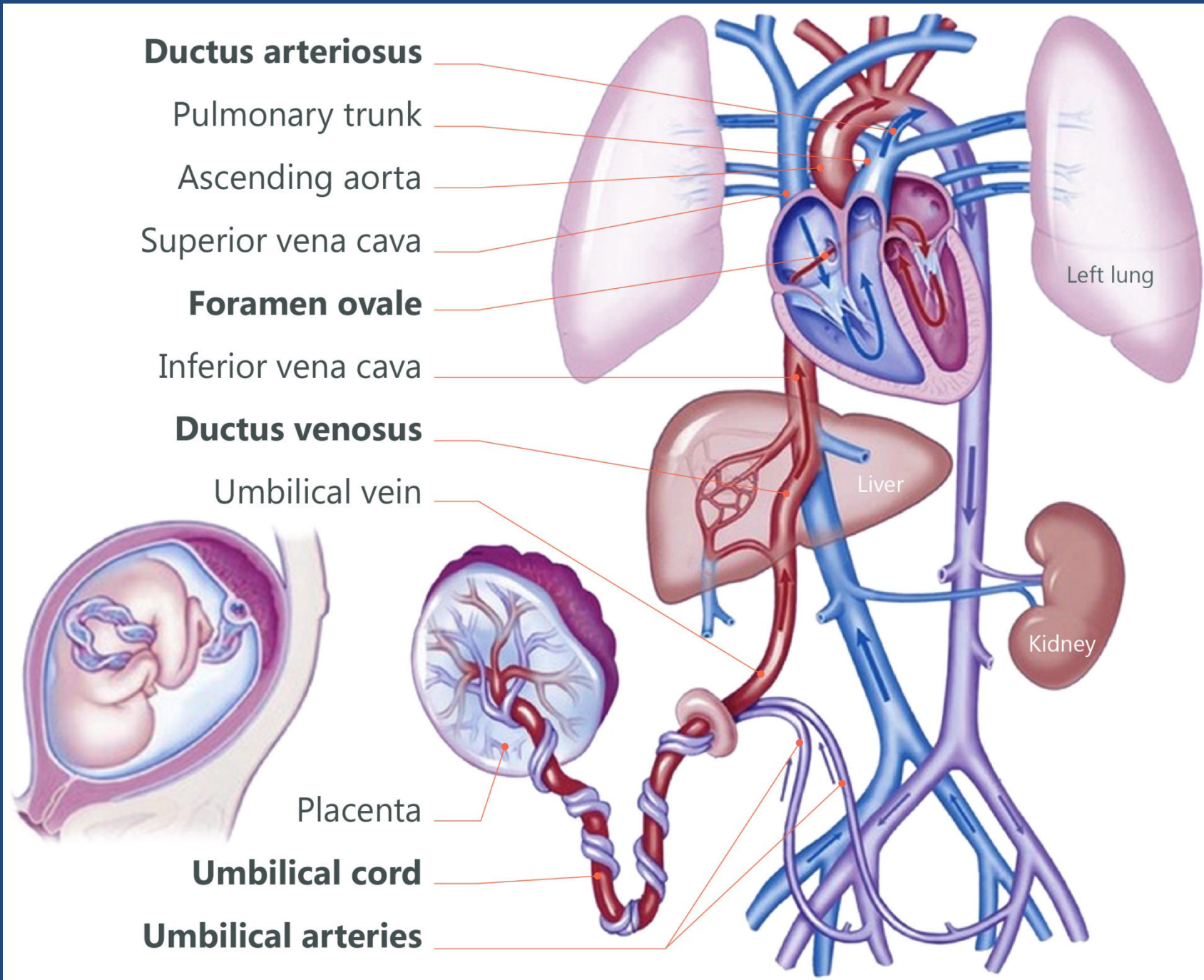












1. The sinus venosus gives rise to:

- a. Part of the left atrium.
- b. Part of the right atrium.
- c. Part of the left ventricle.
- d. Part of the right ventricle.
- e. Part of both atria.

2. The interatrial septum consists of two parts that partially overlap leading to an opening called:

- a. Ostium primum.
- b. Ostium secundum.
- c. Foramen ovale.
- d. Fossa ovalis.

3. Regarding the fetal circulation, one of the following is correct:

- a. The oxygenated blood is carried from placenta to the fetus through the left umbilical vein.
- b. The blood passes from the liver to I.V.C via ductus arteriosus.
- c. The blood passes from the pulmonary trunk to arch of aorta via ductus venosus.
- d. Blood in the descending aorta reaches the placenta through the umbilical veins.

Thank you